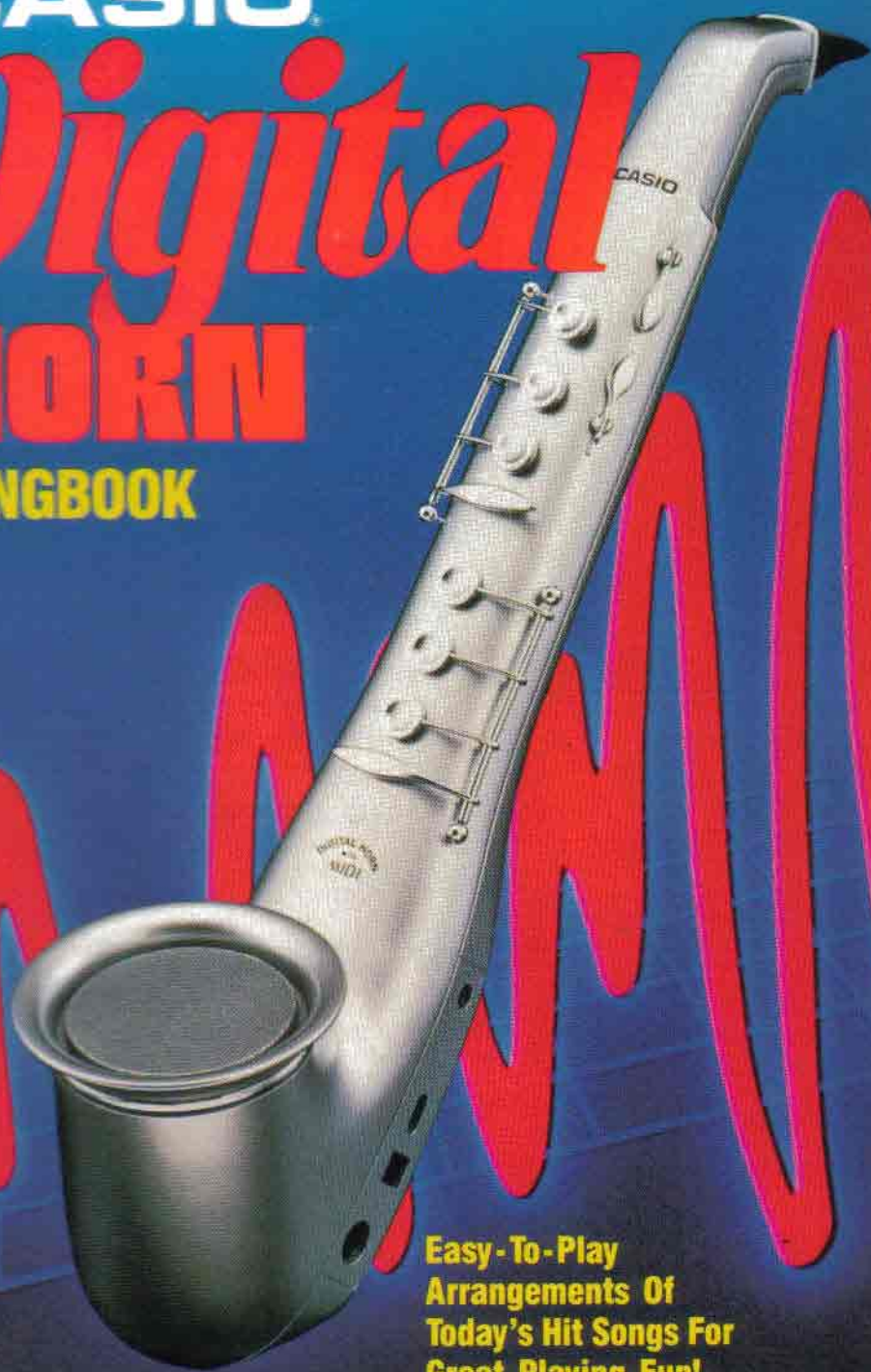


**CASIO**

***Digital***  
**HORN**  
**SONGBOOK**



**Easy-To-Play  
Arrangements Of  
Today's Hit Songs For  
Great Playing Fun!**

**HL** HAL LEONARD  
PUBLISHING  
CORPORATION

# CASIO® *Digital* HORN

## SONGBOOK

### Contents

- 2 All I Need Is A Miracle
- 6 Maniac
- 10 Flashdance . . . What A Feeling
- 17 We Built This City
- 20 Everytime You Go Away
- 23 Just The Way You Are
- 28 Sad Songs (Say So Much)

**HL** HAL LEONARD  
PUBLISHING  
CORPORATION  
Home Office: 960 East Main Street  
Waco, TX 76797 National Sales Office:  
8115 West Bluemound Road  
Milwaukee, WI 53213

E-Z Play® TODAY Music Notation © 1975 HAL LEONARD PUBLISHING CORPORATION

For all works contained herein:

International Copyright Secured ALL RIGHTS RESERVED Printed in the U.S.A.

Unauthorized copying, arranging, adapting, recording or public performance is an infringement of copyright.  
Infringers are liable under the law.

# All I Need Is A Miracle

Words and Music by  
Michael Rutherford and Christopher Neil

B $\flat$  F B $\flat$  E $\flat$  B $\flat$  F

E $\flat$  B $\flat$

I said go if you wan - na go,  
nev - er had an - y time, and I

D F F F F D $\flat$  G G G

stay if you wan - na stay.  
nev - er had an - y call. I did - n't  
But I went

Dm G F F F D $\flat$  G $\flat$  F D C B $\flat$

care if you hung a - round me, I did - n't  
out of my way just to hurt you, the

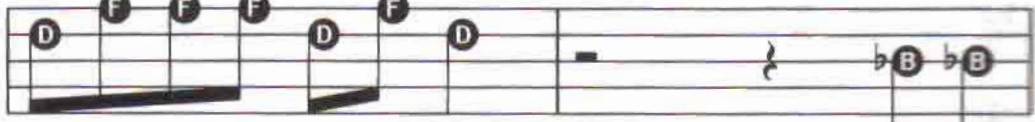
Gm



care if you went a - way.  
one I should - n't hurt at all.

And I

Bb



know you were nev - er right;  
thought I was be - ing cool;

I'll ad -  
yeah, I



mit I was nev - er wrong.  
thought I was be - ing strong.

I could  
But it's

Dm



nev - er make up my mind,  
al - ways the same old story,

I made it  
you nev - er

Gm



up as I went a long. —  
 know what you've got till it's gone.

And though I  
 if |

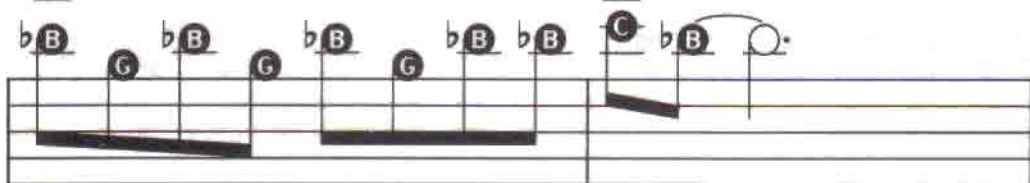
E<sub>b</sub>



treat - ed you like a child, —  
 ev - er catch up with you, —

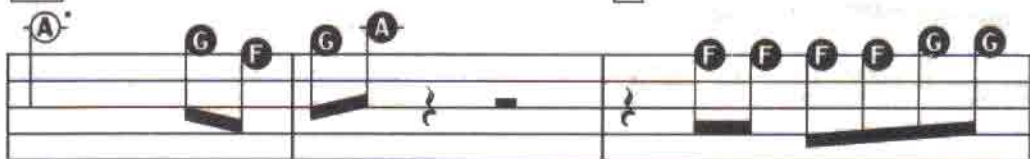
I'm gon - na  
 I'm gon - na

E<sub>b</sub>



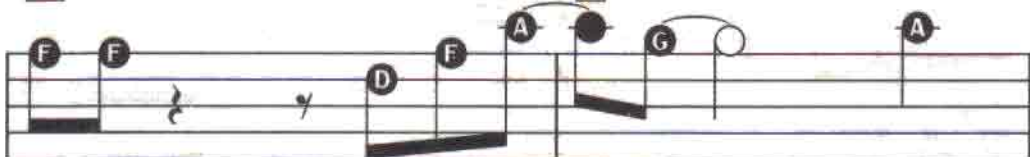
miss you for the rest of my life. —  
 love you for the rest of your life. —

Dm 7



All I need is a mir -

B<sub>b</sub>



a - cle. All I need —

is

**B $\flat$**  **F**

you. \_\_\_\_\_ All I need is a mir -

**B $\flat$**  **F**

a - cle. All I need \_\_\_\_\_ is you. \_\_\_\_\_

**B $\flat$**  **F**

\_\_\_\_\_ All I need is a mir -

**B $\flat$**  **F**

a - cle. All I need \_\_\_\_\_ is

**B $\flat$**  **Cm 7** **B $\flat$**  **F**

you. \_\_\_\_\_ | you. \_\_\_\_\_

# Maniac

Music and Lyric by  
Michael Sembello and Dennis Matkosky

1

4/4

**E<sub>b</sub>** **F7** **G<sub>m</sub>**

2

**D** **D**

Just a small-town girl on a Saturday night, looking  
ice-blue line of insanity is a

**F**

**B<sub>b</sub>** **F**

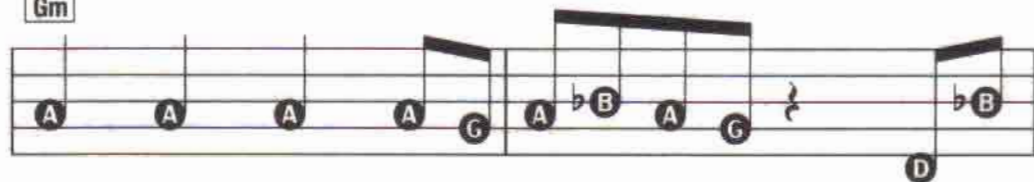
for the fight of her life; in the real-time world no one  
place most nev-er see. it's a hard-won place of

**D7**

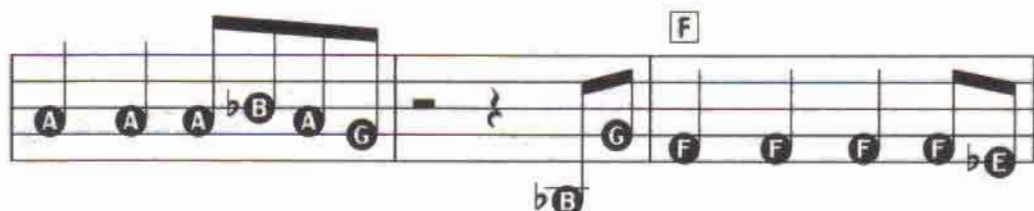
**D** **D**

sees her at all, they touch all say she's crazy. Lock-ing  
mys-ter-y, it but can't hold it. You

Gm

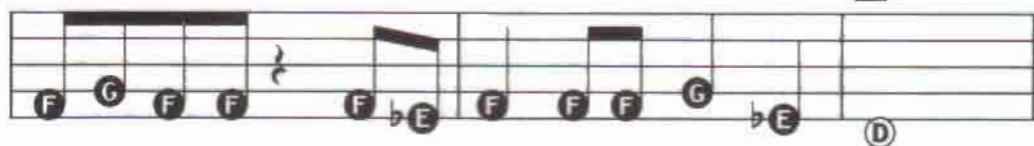


rhy - thms to the — beat of her heart, chang - ing  
work all your life for that mo - ment in time, it could



move - ment in - to light, she has danced in - to the —  
come or pass — you by. It's a push - shove world, but there's

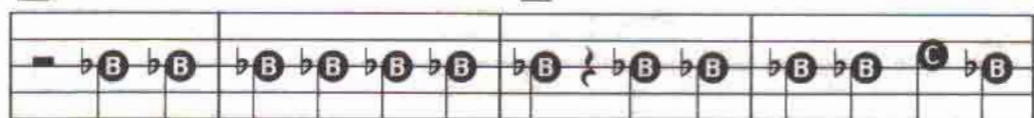
D 7



dan - ger zone when the danc - er be - comes the dance.  
al - ways a chance if the hun - ger stays — the night.

C 7

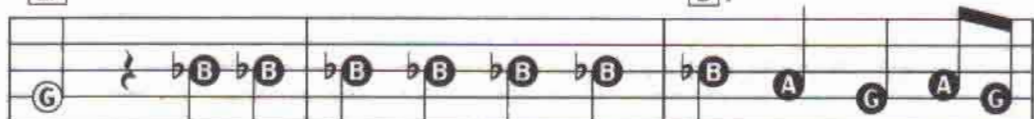
D 7



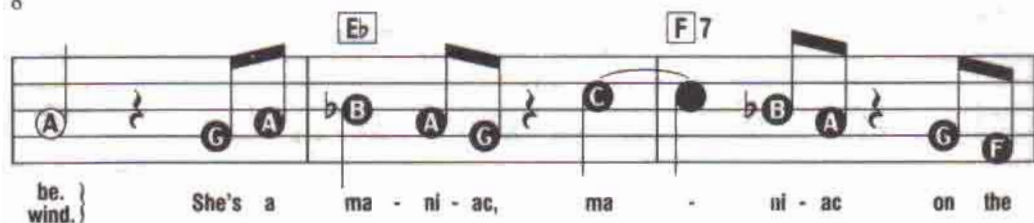
It can cut you like a knife if the gift be - comes the  
There's a cold ki - net - ic heat strug - gling, stretch - ing for the

Eb

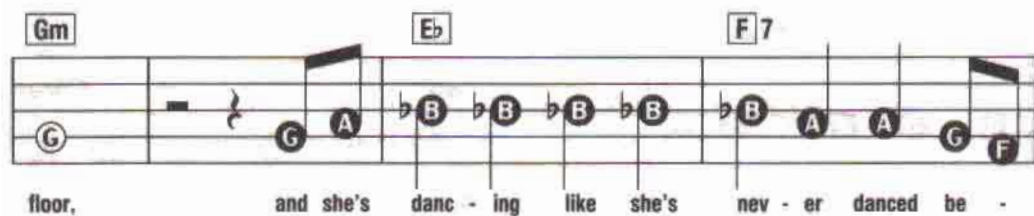
D 7



fire peak, on the wi - re be - tween will and what will —  
nev - er stop - ping, with her head a - gainst the —



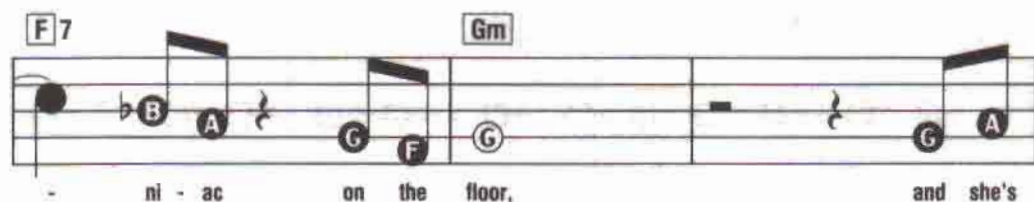
be. } wind.) She's a ma - ni - ac, ma - ni - ac on the



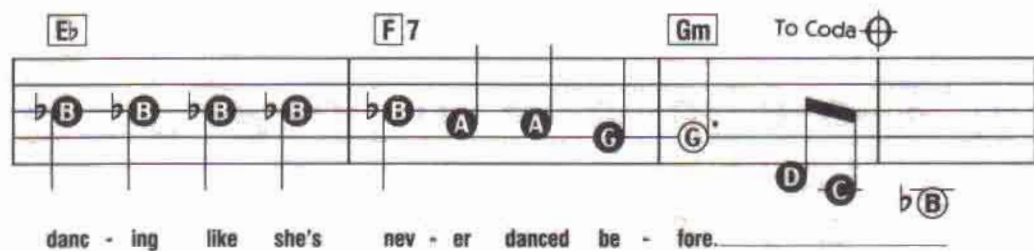
floor, and she's danc - ing like she's nev - er danced be -



fore. She's a ma - ni - ac, ma -



- ni - ac on the floor, and she's



To Coda

danc - ing like she's nev - er danced be - fore.

D.S. al Coda  
(Return to  $\text{C}$   
Play to  $\text{C}$  and  
skip to Coda)

CODA  
 $\text{C}$

On the

She's a

**ma - ni - ac, ma - ni - ac on the floor,**

**and she's danc - ing like she's nev - er danced be -**

**fore, and she's danc - ing like she's**

**nev - er danced be - fore.**



**F** **Cm** **Gm**

C C D E D D D C B C B

cried si - lent tears full of pride in a

**E<sub>b</sub>** **B<sub>b</sub>** **A<sub>b</sub>** *Faster*

G F E F E F E D C

world made of steel, made of stone.

**E<sub>b</sub>** **F** **B<sub>b</sub>**

B B C D C B

Well, I hear the

**F** **Cm** **Gm**

C F C D E D C D C B C B

mu - sic, close my eyes, feel the rhy - thm. Wrap a -

**E<sub>b</sub>** **B<sub>b</sub>** **A<sub>b</sub>**

G B G F E D E D C

round, take a - hold of my heart.

Eb    F                    Gm                    F                    Eb                    F

What a feel - ing.                    Bein's be -

Gm                    F                    Eb                    F                    Bb                    Cm 7

liev - in'.                    I can have it all, now I'm

Bb                    Eb                    F                    F 7

danc - ing for my life.                    Take your

Gm                    F                    Eb                    F                    Gm                    F

pas - sion                    and make it hap - pen.

Eb                    F                    Bb                    Cm 7                    Bb                    Eb

Pic - tures come a - live, you can dance right through your

**F** **F7** **B $\flat$**

life.

**F** **Cm** **Gm**

**E $\flat$**  **B $\flat$**  **A $\flat$**

**E $\flat$**  **F** **B $\flat$**  **F**

Now, I hear the mu - sic, close my

**Cm** **Gm** **E $\flat$**

eyes, I am rhy - thm. In a flash it takes

**Bb** **Ab** **Eb** **F**

hold of my heart. What a

**Gm** **F** **Eb** **F** **Gm** **F**

feel - ing. Bein's be - liev - in'.

**Eb** **F** **Bb** **Cm 7** **Bb** **Eb**

I can have it all, now I'm danc - ing for my

**F** **F 7** **Gm** **F**

life. Take your pas - sion

**Eb** **F** **Gm** **F** **Eb** **F**

and make it hap - pen. Pic - tures

**B $\flat$**  **Cm 7** **B $\flat$**  **E $\flat$**  **F**

come a - live, now I'm danc - ing through my life.

**F 7** **A $\flat$**  **F**

What a feel - ing.

**A $\flat$**  **F**

**Gm** **F** **E $\flat$**  **F**

What a feel - ing. Bein's be -

**Gm** **F** **E $\flat$**  **F** **B $\flat$**  **Cm 7**

liev - in'. Pic - tures come a - live, you can

B $\flat$       E $\flat$       F      F7

dance right through your life. What a

Gm      F      E $\flat$       F      Gm      F

feel - ing. What a feel - ing.

E $\flat$       F      Gm      F      E $\flat$       F

What a feel - ing. Be - in's be -

Gm      F      E $\flat$       F      Gm      F      E $\flat$       F

liev - in'. I am mu - sic now. I am

Gm      F      E $\flat$       F      B $\flat$

rhy - thm now. What a feel - in'.

# We Built This City

Words and Music by  
Taupin, Martin Page, Peter Wolf and Dennis Lambert

Chord progression: **B $\flat$**  **E $\flat$**  **B $\flat$**  **E $\flat$**

Chord progression: **F7** **B $\flat$**

Say you don't know me  
Some - one always play - ing or

Chord progression: **E $\flat$**  **A $\flat$**

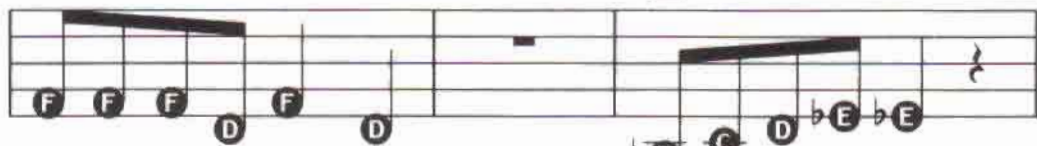
rec - og - nize my face.  
cor - por - a - tion games.

Say you don't care who  
Who cares, they're al - ways

Chord progression: **F** **B $\flat$**

goes changing to that kind of place.  
cor - por - a - tion names.

E<sub>b</sub>

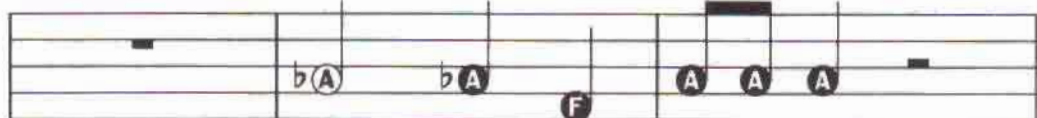


Knee deep in the hoop - la,  
We just wants to dance here,

sink - ing in your fight,  
some - one stole the stage.

A<sub>b</sub>

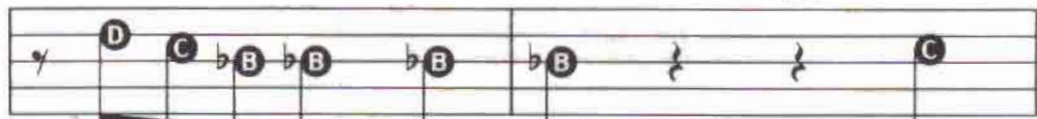
F



They too call us man - y run - a - ways  
ir - res - pon - si - ble,

B<sub>b</sub>

F



eat - ing up the night,  
write us off the page.

Mar -

G<sub>m</sub>

B<sub>b</sub>



con - i plays the mam - ba,

lis - ten to the ra - di -

F

B<sub>b</sub>

E<sub>b</sub>

B<sub>b</sub>

E<sub>b</sub>



o. Don't you re - mem - ber?

We built this cit - y,

B $\flat$  E $\flat$  B $\flat$  F

we built this city on rock and roll.

G $m$  E $\flat$

We built this city, we

B $\flat$

built this city on rock and roll. Built

E $\flat$  B $\flat$

this city. We built this city on

F B $\flat$  E $\flat$  E $\flat$  B $\flat$

rock and roll.

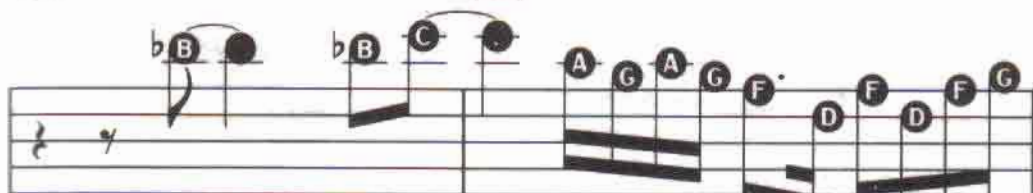
# Everytime You Go Away

Words and Music by  
Daryl Hall

Hey...

if we can't solve an - y prob - lems,  
Go on and go free,

then why do we lose so man - y tears?  
may - be you're too close to see.

**Bb****Dm**

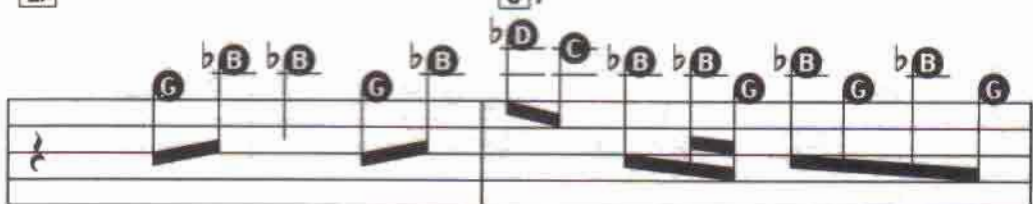
I Oh, \_\_\_\_\_ feel your so you \_\_\_\_\_ go a - gain \_\_\_\_\_  
 I can feel your bod - y move, \_\_\_\_\_

**Eb****F**

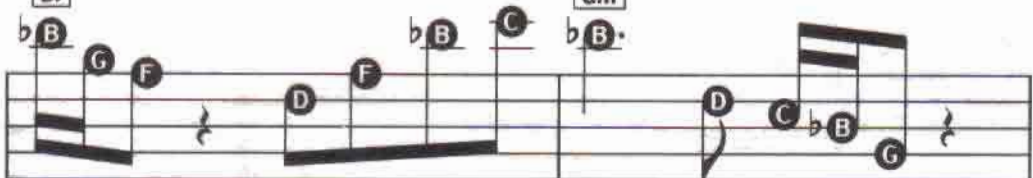
when the lead - ing man ap - pears. \_\_\_\_\_  
 does - n't mean that much to me. \_\_\_\_\_

**Gm****D7**

I can't al \_\_\_\_\_ ways the same \_\_\_\_\_ theme;  
 go \_\_\_\_\_ on \_\_\_\_\_ singing the same \_\_\_\_\_ theme;

**Eb****C7**

'cause can't you see we've got ev - 'ry - thing go - ing on and on and  
 can't you see we've got ev - 'ry - thing, ba - by, e - ven though you

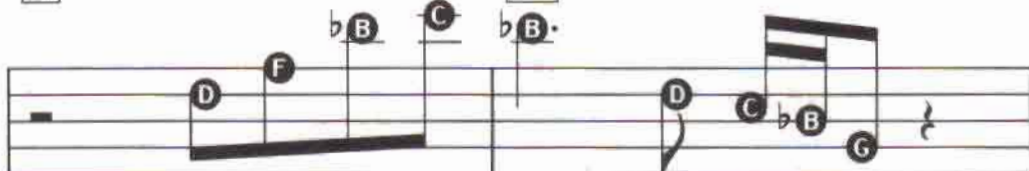
**Bb****Gm**

on. \_\_\_\_\_ } Ev - 'ry - time you go a - way, \_\_\_\_\_  
 know. \_\_\_\_\_ }

Cm



you take a piece of me with — you.

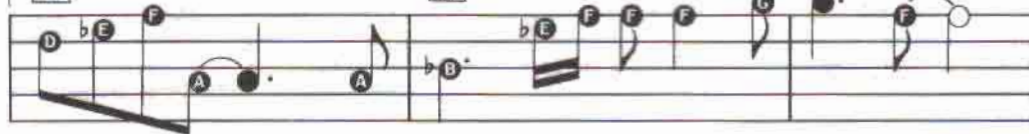
B $\flat$ 

Ev - 'ry - time you go a - way, —

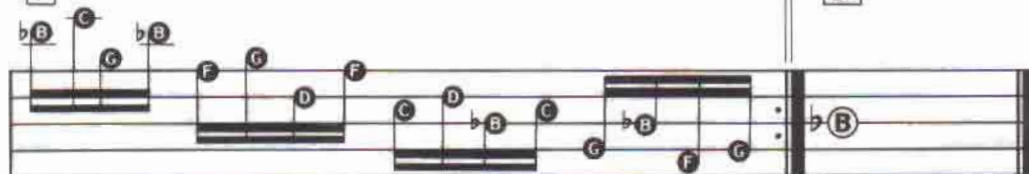
Cm



{ you take take a piece piece of me me with — you.  
you take a piece of me with — you.

B $\flat$ 

F



# Just The Way You Are

Words and Music by Billy Joel

Chord progression: G Cm C G Cm C G

Chord progression: G B Em C

Don't go chang - ing  
Don't go try - ing  
to try and  
some new

Chord progression: Em G7 C Cm

please me. You nev - er let col - me down be -  
fash - ion. Don't change the the or of your

Chord progression: G Dm7 G7 C

fore. mm mm mm mm  
hair. mm mm mm mm  
Don't i  
You always

**Cm** **G** **Em 7** **G**

mag - ine  
have my

you're too fa - mil - iar  
un - spok - en pas - sion

**A 7**

And I  
Al - though

don't see  
I might

you not an seem - y  
to

**D 7** **G**

more \_\_\_\_\_  
care \_\_\_\_\_

\_\_\_\_\_ would not  
\_\_\_\_\_ don't want

**Em** **C** **Em** **G 7**

leave you  
clever

in times of trou - ble  
con - ver - sa - tion

**C** **Cm**

we  
I

nev nev - er  
nev - er

could  
want

have  
to

come  
work

this  
that

**G** **Dm** **G7** **C**

far hard mm mm mm | | look just the want

**Cm** **G** **Em**

good some times one I'll that take I the can bad talk times to

**Am** **D7** **G** **Cm** **G**

I'll take you just the way you are. I want you just the way you are.

**C** **D**

I need to know that you will

**Bm7** **E7** **Am**

al ways be The same old

**D** **G** **G**

some - one that I knew Oh

**E<sub>b</sub>** **F**

what will it take till you be -

**Dm 7** **G 7** **Cm 7**

lieve in me. The way that

**F** **D 7** **G**

I be - lieve in you \_\_\_\_\_ I \_\_\_\_\_

**G** **Em** **C**

\_\_\_\_\_ said I love you and that's \_\_\_\_\_ for \_\_\_\_\_

Em C Cm

ev - er. And this I prom - ise from the

G Dm G7 C

heart mm mm I could not

Cm G Em

love you an - y bet - ter

Am D7 G Cm

I love you just the way you are.

C G Cm C G

# Sad Songs

(Say So Much)

Words and Music by  
Elton John and Bernie Taupin

**C**

**F** **G**

**C**

Guess there are

**C**

times suf - when we all e - need to share a lit -  
fer - in' ough, to share a lit -  
to write

**F**

- tie pain and iron - ing out the  
it down when ev - 'ry sin - gle

G



rough word \_\_\_\_\_ makes spots sense, is then the it's hard - est part when to

C

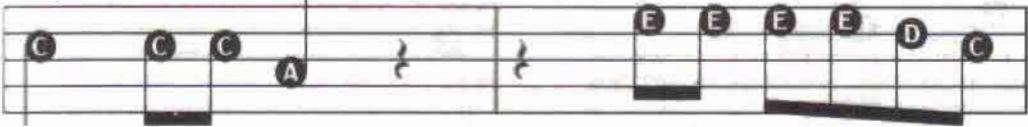


mem - o - ries re - main. The And kick it's have those songs a - round. in -



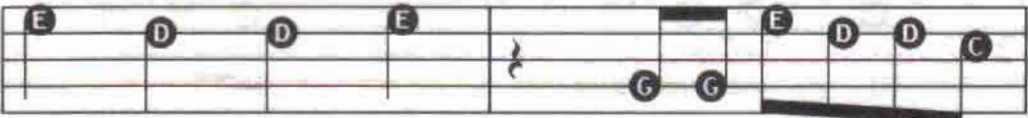
times side like is these in \_\_\_\_\_ when the \_\_\_\_\_ all line need that to hear \_\_\_\_\_ the ra - fi - nal - ly gets

F



di - o, \_\_\_\_\_ 'cause from the lips of \_\_\_\_\_ to you, \_\_\_\_\_ And it feels if some - thing

G



some hurt old so sing bad - er, we can share the troub - les suf - fer just e -



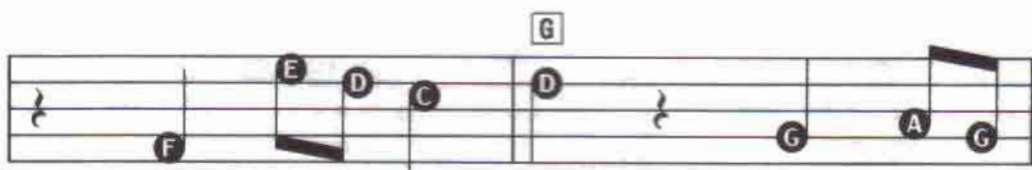
we al - read - y know. }  
 nough to sing the blues. }

Turn 'em on, \_\_\_\_\_



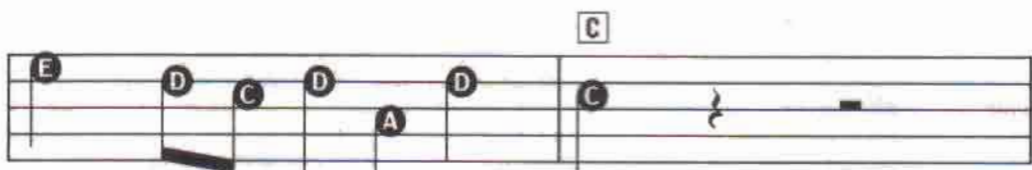
\_\_\_\_\_ turn 'em on, \_\_\_\_\_

turn on those sad songs.



When all hope is gone

why don't you



tune in and turn \_\_\_\_\_ them on?



They reach in - to your room,

oh, \_\_\_\_\_

**G** **F**

just feel their gen - tle touch.

**G**

when all hope is gone a

**C** To Coda ⊕

sad song says so much.

1 2

If some - one else is Sad songs, they

**F** **Dm**

say, sad songs, they

**G** **C**

say, sad songs, they

**F** **Dm**

say, sad songs they

**D.S. al Coda**  
 (Return to  $\oplus$   
 Play to  $\oplus$  and  
 skip to Coda)

**G**

say so much. So turn 'em on

**CODA**  
 $\oplus$

**G**

When all hope is gone you know a

**C**

sad song says so much.

**G**

When ev - 'ry bit of hope is gone you know a

**C**

sad song says so much.

The following songs are in the book and also recorded as play-along arrangements on the cassette.

All I Need Is A Miracle

Maniac

Flashdance...What A Feeling

We Built This City

Everytime You Go Away

Just The Way You Are

Sad Songs (Say So Much)